



IMAGEM

Nuclear Medicine expertise accessible
with a single click




IMAGEM


TUTORIALS, PETCT BASICS & LIBRARY

IMAGEM is a unique platform grouping a set of tools for training, information and research. IBA has developed IMAGEM to simplify, accelerate and improve a set of recurrent tasks facing professionals such as new product trainings, clinical case studies, or bibliographic activities.

The 3 modules of IMAGEM:



Tutorials

Access 


**Learn from experts,
in practice**



PETCT Basics

Access 

**Explore the
breadth of PETCT**



Library

Access 

**Simplify your
bibliographic activities**

With IMAGEM:

- ▶ **Train yourself** on new products, improve your knowledge of PETCT and perform your bibliographic activities on a single website;
- ▶ In a **single click**, have **access** to product trainings, 313 PETCT presentations, 5267 scientific articles, 116 events and 247 news items;
- ▶ Have access to content written by **experts** and updated **at regular intervals**.

IMAGEM TUTORIALS

LEARN FROM EXPERTS, IN PRACTICE

IMAGEM Tutorials offers practical training on major Radiopharmaceuticals. These tutorials are written by experts in each particular field. This module allows access, everywhere and at any time, to all the educational content on specific products (18-FNa,...).

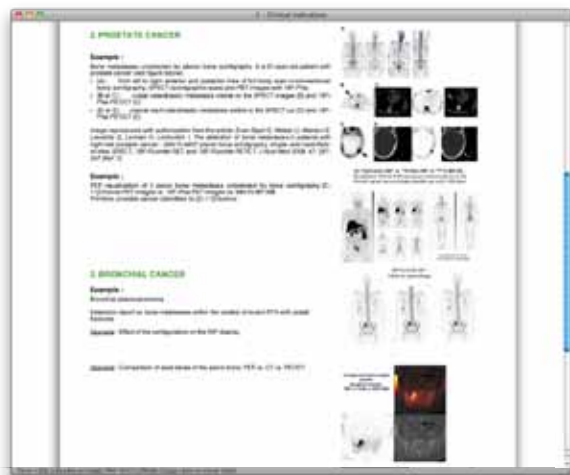
Each module is built to provide the most relevant theoretical knowledge about the product. It also permits the user to learn by way of numerous corrected clinical cases. These presentations combine images, questions, answers, rationales and references. By the end of the training the user will be more comfortable in the use of the new product.

All presentations are illustrated thanks to the classical tools used in a Nuclear Medicine workstation (Fusion PET or SPECT CT, volume navigation, MIP, SUV Calculations,...). This includes a 3D Fusion Viewer, which provides realistic emulation of a 3D consol and allows training in real workstation conditions.

Typical content of an IMAGEM's tutorial

Theoretical presentation	Clinical cases
<p>4 chapters:</p> <ul style="list-style-type: none"> ▶ General Aspects ▶ Clinical indications ▶ Efficacy, quantification & pending questions ▶ Conclusion and references 	<p>4 steps:</p> <ul style="list-style-type: none"> ▶ Clinical context ▶ Questions ▶ Diagnostic ▶ Discussion

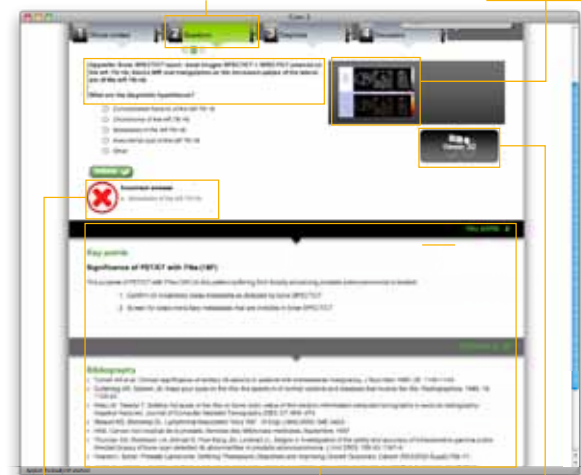
Tutorials extract: 18-FNa Theoretical presentation



Tutorials extract: 18-FNa Clinical case

Questions written by expert

High quality pictures



Corrections

Key points & Bibliography

3D Fusion Viewer

5 Key Specificities:

- ▶ Theoretical content built on latest references
- ▶ High quality pictures (full screen display)
- ▶ Multiple choice questions provided with corrections
- ▶ Key Points section provides summaries of learning from each case
- ▶ The 3D Fusion Viewer allows to practice as in a Nuclear Medicine workstation

IMAGEM PETCT BASICS

EXPLORE THE BREADTH OF PETCT

IMAGEM content structure:

Menu

Background and general practice (501 slides)

Reference CT Anatomy (291 slides)

Brain
Head and Neck
Chest
Abdomen

SOP's for PETCT (49 slides)

General PET SOP
SOP Brain
SOP Head and Neck
SOP Heart
Whole body

The normal FDG PETCT in Head and Neck (14 slides)

Artefacts and normal variants of FDG PETCT (147 slides)

Introduction
Head and Neck
Chest
Abdomen
Vessels
Musculoskeletal
Breast
Lymph nodes
Artefacts and Pitfall

PETCT Clinical Applications (719 slides)

Oncology (508 slides)

FDG PETCT
Treatment response in cancer
Head and Neck
Breast
Skin cancer
Chest
Lung Cancer
Oesophagus
Colon, rectum
MusculoSkeletal
Lymphoma
Genito-urinary (renal cancer)
Gynaecological Cancer
Prostate
Paediatrics
Non FDG PETCT

Cardiovascular (54 slides)

O-15 water PETCT
Rb-82 PETCT

Inflammatory disease (28 slides)

Epilepsy (40 slides)

Dementias (42 slides)

Ga68 PETCT (47 slides)

IMAGEM PETCT Basics is an extensive educational platform dedicated to bringing Nuclear Medicine professionals up to speed with the current level of knowledge on PETCT. IMAGEM provides its users with PETCT / CT background, general practice information and clinical applications.

IMAGEM counts 313 presentations:

- ▶ 112 presentations about PETCT and CT background and general practice (Reference CT anatomy, SOP's for PETCT, Artefacts and normal variants of FDG PETCT,...);
- ▶ 201 clinical cases covering the major indication on PETCT (Oncology, Cardiovascular, Inflammatory disease, Epilepsy, Dementias,...).

PETCT Basics presents the major tracers available today (FDG; O-15 water; Rb-82; Ga-68).

6 Key Specificities:

- ▶ Extensive view of PETCT knowledge
- ▶ Content written by a team of 18 experts
- ▶ Coverage of the major PETCT tracers from FDG to O-15 water
- ▶ User friendly slide viewer to navigate through presentations
- ▶ High quality pictures (zoom to 500%)
- ▶ Keywords search functionality

The content of PETCT Basics has been elaborated by a team of 18 Nuclear Medicine professionals. All of them are experts in their particular field. This team of experts was led and coordinated by Professor Peter J. Ell and the staff of the Institute of Nuclear Medicine in London.

Authors and affiliation of IMAGEM PETCT Basics

<p>Institute of Nuclear Medicine, UCLH London, UK</p> <ul style="list-style-type: none"> ▶ Professor Peter J. Ell, FMedSci AOA DR HC ▶ Professor Simona ben Haim, MD ▶ Dr Jamshed Bomanji, MB BS MSc PhD FRCR FRCP ▶ Dr John Caddell Dickson, BSc MSc PhD ▶ Dr Sharon Hain, MBBS FRACP ▶ Dr Irfan Kayani, MBBS BSc MRCP FRCP ▶ Dr Ashley McAllister Groves, BSc MBBS MRCP MD FRCP ▶ Ms Wendy Waddington, BSc MSc CPhys MInstP MIPEM 	<p>Clinical PET Centre, St Thomas' Hospital London, UK</p> <ul style="list-style-type: none"> ▶ Dr. Sally F. Barrington, MBBS MSc FRCP MD ▶ Dr Michael J. O'Doherty, BA MBBS MSc FRCP MD 	<p>Paul Strickland Scanner Center, Mount Vernon Hospital Northwood, Middlesex, UK</p> <ul style="list-style-type: none"> ▶ Dr Jane Chambers, FRCP (Edin) FRCP (C) MSc ▶ Dr. Wai Lup Wong, BA FRCP FRCP
<p>Cheltenham Imaging Centre, Linton House Clinic Cheltenham, Gloucestershire, UK</p> <ul style="list-style-type: none"> ▶ Dr. Iain Lyburn, BSc MRCP FRCP 	<p>Dept of Clinical and Experimental Epilepsy, Institute of Neurology London, UK</p> <ul style="list-style-type: none"> ▶ Professor John Duncan, MA DM FRCP FMedSci 	<p>PET & Cyclotron Unit, Copenhagen University Hospital Copenhagen, Denmark</p> <ul style="list-style-type: none"> ▶ Dr. Annika Loft, MD PhD
	<p>Department of Nuclear Medicine, Royal Victoria Hospital Belfast, UK</p> <ul style="list-style-type: none"> ▶ Dr Simon Hughes 	<p>Turku PET Centre, c/o Turku University Hospital Turku, Finland</p> <ul style="list-style-type: none"> ▶ Professor Juhani Knuuti, MD
	<p>Klinik f. Nuklearmed. / PET-Zentrum, Zentralklinikum Bad Berka GmbH Bad Berka, Germany</p> <ul style="list-style-type: none"> ▶ Professor Richard Baum 	<p>Department of Nuclear Medicine, Rambam Health Care Campus Haifa, Israel</p> <ul style="list-style-type: none"> ▶ Professor Ora Israel, MD

PETCT Basics extract: Reference CT Anatomy - Head and Neck - Sinuses

Fit width **Thumb view**

Fit page

PETCT Basics extract: FDG in Head and Neck Cancer - Case 3

Previous/next slide button **Search bar**

Scale **Author** **Expert's notes**

IMAGEM LIBRARY

SIMPLIFY YOUR BIBLIOGRAPHIC ACTIVITIES

IMAGEM Library is a unique supervised database, exclusively dedicated to Molecular Imaging. It centralizes in one single platform the key flow of information (scientific articles, news and events). This database is updated daily with the latest pieces of information from 2008 onwards.

Scientific articles are extracted from the major article databases, life science journals and online books. News is extracted from the major industry and scientific websites (Eg. Auntminnie; Diagnostic Imaging; Health imaging; MolecularImaging;...). Events are drawn from the major scientific societies (EANM, BNMS, SNM, SFMN,...) and commercial organizations.

Each entry to the database is individually defined and processed by a team of information specialists.

Main sources of IMAGEM Library

Scientific articles	News	Events (illustrations)
From: <ul style="list-style-type: none"> ▶ Annals of nuclear medicine ▶ Clinical Nuclear Medicine ▶ European Journal of Nuclear Medicine and Molecular Imaging ▶ Journal of nuclear cardiology ▶ Journal of nuclear medicine ▶ Molecular imaging and biology ▶ Nuclear medicine ▶ Nuclear Medicine and Biology ▶ Nuclear Medicine Communications ▶ Quarterly Journal of Nuclear Medicine and Molecular Imaging ▶ Seminar in Nuclear Medicine ▶ The international journal of cardiovascular imaging 	From: <ul style="list-style-type: none"> ▶ Auntminnie ▶ BusinessWire ▶ Diagnostic Imaging ▶ DOTMed ▶ FDA ▶ Health imaging ▶ MedicalPhysicsWeb ▶ Medpagetoday ▶ MolecularImaging ▶ PharmaLive ▶ PRnewswire ▶ Reuters ▶ SNM 	From: <ul style="list-style-type: none"> ▶ AHRA ▶ ASNC ▶ BNMS ▶ EANM ▶ ESMI ▶ ESR ▶ German Society for Nuclear Medicine ▶ IRIST ▶ RSNA ▶ SFMN ▶ SNM ▶ SNMI ▶ TSNM ▶ World Federation of Nuclear Medicine & Biology ▶ World Molecular Imaging Congress

Library provides users with three different search tools: normal search; advanced search; thematic search. Each user can make a personalized search, filtering data by keywords, document type, date, modalities, medical specialties, radioisotopes, or simply use one of the predefined searches.

Additionally, the user has the possibility to be informed at regular intervals (every week, month) via personalized alerts, newsletters and RSS feeds associated to his saved searches.

Additional functionalities include: search history, favorites list, printing, send by email,...

Library extract: Advanced search tool



Library extract: A typical search result page



5 Key Specificities:

- ▶ Unique database on Molecular Imaging (scientific articles, news and events)
- ▶ Database updated daily by information specialists
- ▶ Extended search functionalities including search by modalities, medical specialties, radioisotopes, date and document type
- ▶ Personalized alerts available on email or RSS feeds
- ▶ Convenient additional functionalities (search history, favorites list, printing, send by email)

CIS bio international

Member of IBA group

B.P. 32 – 91192 Gif-sur-Yvette Cedex - France

Tel: +33 1 69 85 75 70 - Fax: +33 1 69 85 72 09

Headquarters IBA

Avenue Albert Einstein, 4

1348 Louvain-la-Neuve - Belgium

*IBA delivers solutions of unprecedented
Precision in the fields of cancer diagnosis and
Therapy. The company also offers sterilization
And ionization solutions to improve the hygiene
And safety of everyday life.*